

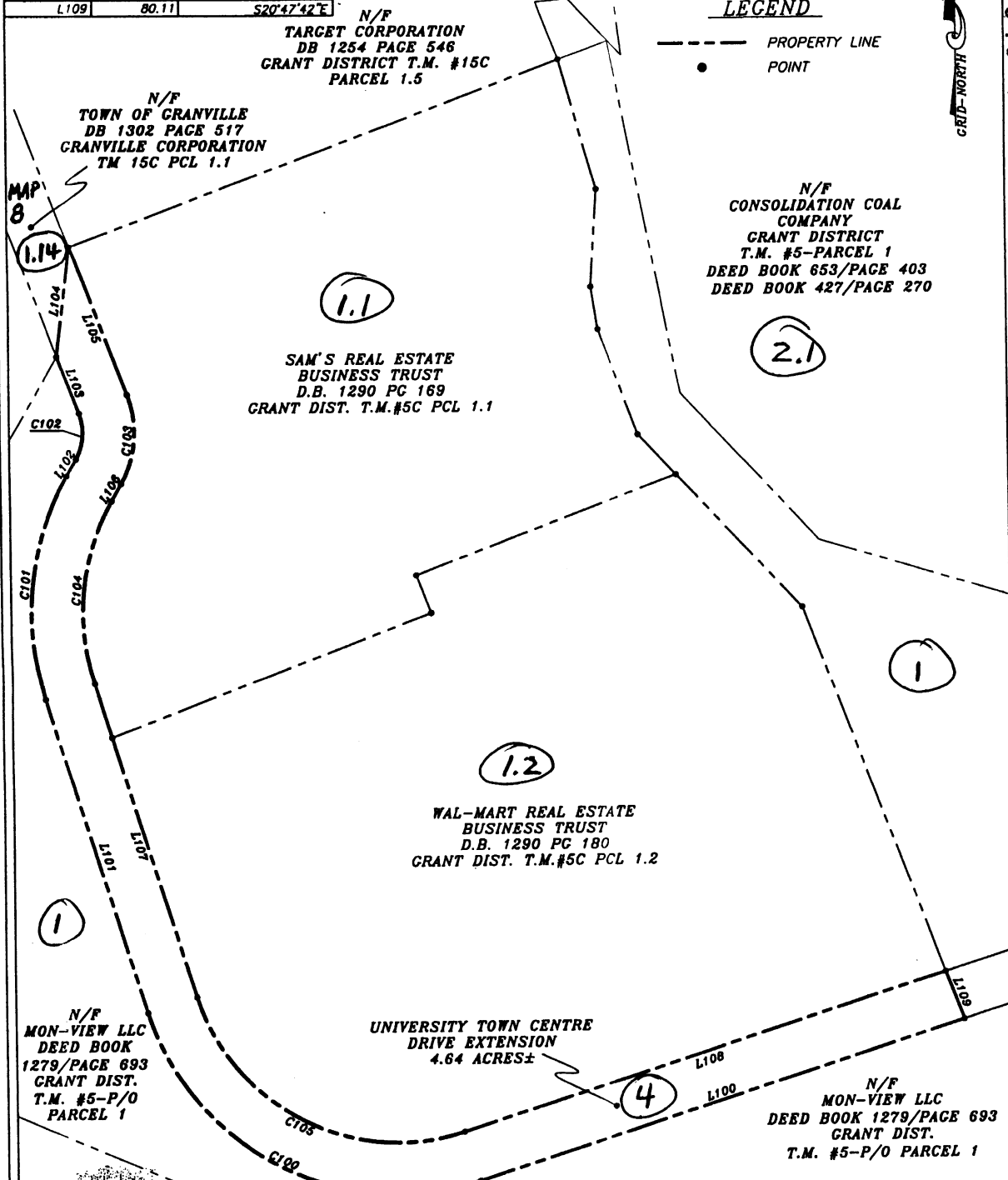
LINE	LENGTH	BEARING
L100	794.05	S72°15'39"W
L101	513.06	N17°23'32"W
L102	30.39	N29°31'44"E
L103	95.00	N20°47'42"W
L104	172.11	N06°54'10"E
L105	247.39	S20°47'42"E
L106	30.39	S29°31'44"W
L107	513.06	S17°23'32"E
L108	789.78	N72°15'39"E
L109	80.11	S20°47'42"E

CURVE	LENGTH	RADIUS	CHORD BEARING	CHORD LENGTH
C100	643.36	408.00	N62°33'57"W	578.74
C101	360.33	440.00	N06°04'06"E	350.34
C102	74.40	84.70	N04°22'01"E	72.03
C103	144.66	164.70	S04°22'01"W	140.06
C104	294.81	360.00	S06°04'06"W	286.65
C105	517.21	328.00	S62°33'57"E	465.26

MAP 13140 PAGE 217

LEGEND

- PROPERTY LINE
- POINT



N/F
MON-VIEW LLC
DEED BOOK
1279/PAGE 693
GRANT DIST.
T.M. #5-P/O
PARCEL 1

SAM'S REAL ESTATE
BUSINESS TRUST
D.B. 1290 PG 169
GRANT DIST. T.M.#5C PCL 1.1

WAL-MART REAL ESTATE
BUSINESS TRUST
D.B. 1290 PG 180
GRANT DIST. T.M.#5C PCL 1.2

UNIVERSITY TOWN CENTRE
DRIVE EXTENSION
4.64 ACRES±

N/F
MON-VIEW LLC
DEED BOOK 1279/PAGE 693
GRANT DIST.
T.M. #5-P/O PARCEL 1

Michael P. Dorsch
MICHAEL P. DORSCH P.S. #457

PREPARED BY:

CTL CTL ENGINEERING OF WEST VIRGINIA, INC.
753 Fairmont Road Morganstown, WV 26501 Phone: 304/298-1155 Fax: 304/298-9308
510-C Street South Charleston, WV 25303 Phone: 304/748-1140 Fax: 304/748-1142
CONSULTING ENGINEERS • TESTING • INSPECTION SERVICES • ANALYTICAL LABORATORIES

PLAT OF LANDS
"UNIVERSITY TOWN CENTRE
DRIVE EXTENSION"

MADE FOR
MONVIEW LLC

GRANT DISTRICT, TAX MAP #5, P/O PARCEL #1
MONONGALIA COUNTY, WEST VIRGINIA
DRAWN BY: JFS CTL JOB NO. 021000030W
DATE: NOVEMBER 30, 2005 SCALE: 1"=200'

JFS 11/15/2005