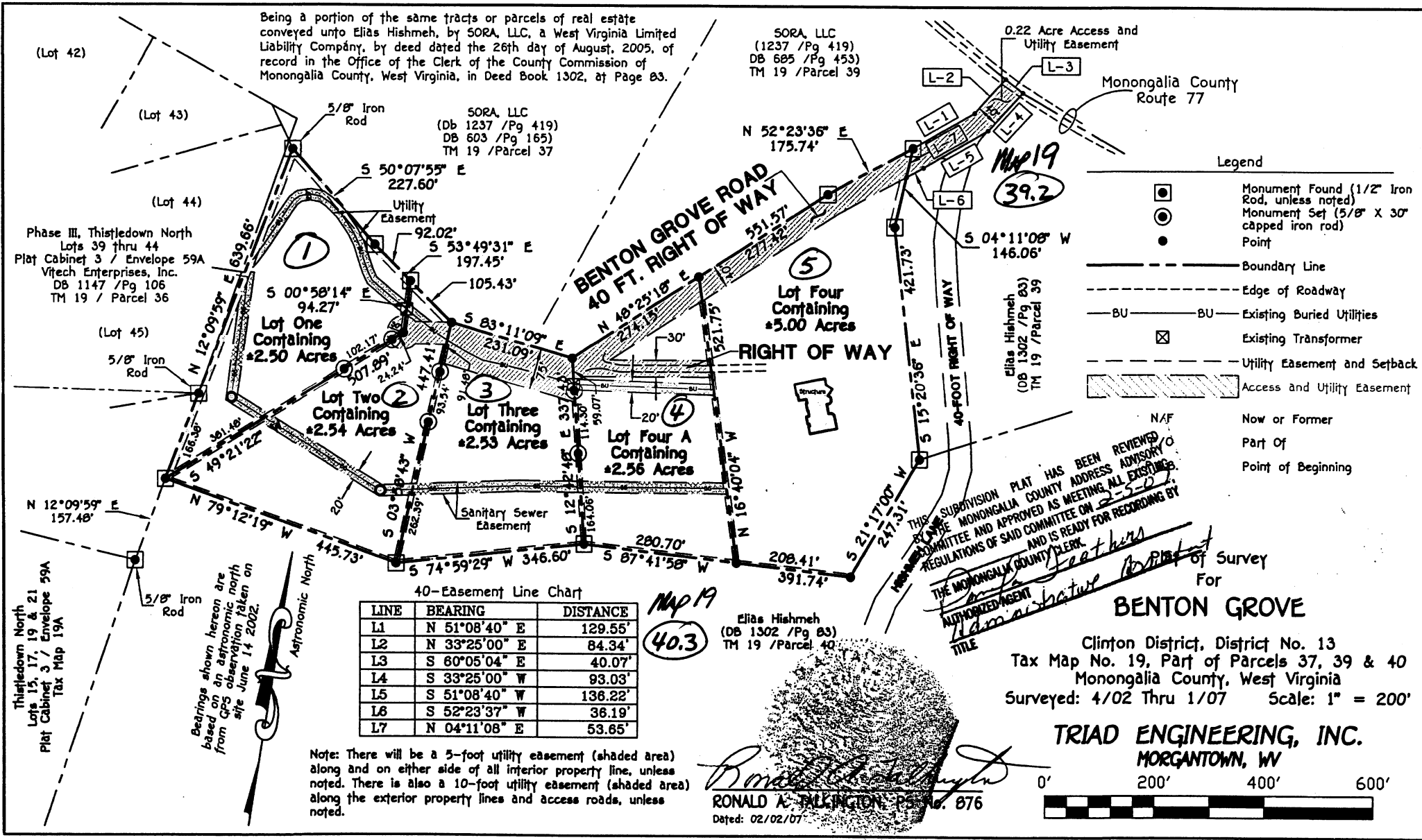


Clinton, 19E
1-5

EXHIBIT

VA 1834 439



Being a portion of the same tracts or parcels of real estate conveyed unto Elias Hishmeh, by SORA, LLC, a West Virginia Limited Liability Company, by deed dated the 26th day of August, 2005, of record in the Office of the Clerk of the County Commission of Monongalia County, West Virginia, in Deed Book 1302, at Page 83.

SORA, LLC
(1237 /Pg 419)
DB 685 /Pg 453)
TM 19 /Parcel 39

SORA, LLC
(Db 1237 /Pg 419)
DB 603 /Pg 165)
TM 19 /Parcel 37

Phase III, Thistledown North
Lots 39 thru 44
Plat Cabinet 3 / Envelope 59A
Vitech Enterprises, Inc.
DB 1147 /Pg 106
TM 19 / Parcel 36

Thistledown North
Lots 15, 17, 19 & 21
Plat Cabinet 3 / Envelope 59A
Tax Map 19A

Bearings shown hereon are based on an astronomic north from GPS observation taken on site June 14 2002.

40-Easement Line Chart

LINE	BEARING	DISTANCE
L1	N 51°08'40" E	129.55'
L2	N 33°25'00" E	84.34'
L3	S 60°05'04" E	40.07'
L4	S 33°25'00" W	93.03'
L5	S 51°08'40" W	136.22'
L6	S 52°23'37" W	36.19'
L7	N 04°11'08" E	53.65'

Note: There will be a 5-foot utility easement (shaded area) along and on either side of all interior property line, unless noted. There is also a 10-foot utility easement (shaded area) along the exterior property lines and access roads, unless noted.

RONALD A. MCKINNON, P.E. No. 876
Dated: 02/02/07

- Legend
- ◻ Monument Found (1/2" Iron Rod, unless noted)
 - ⊙ Monument Set (5/8" X 30" capped iron rod)
 - Point
 - Boundary Line
 - - - Edge of Roadway
 - BU- Existing Buried Utilities
 - ⊠ Existing Transformer
 - - - Utility Easement and Setback
 - ▨ Access and Utility Easement
 - NAF Now or Former
 - Part Of
 - Point of Beginning

THIS SUBDIVISION PLAT HAS BEEN REVIEWED BY THE MONONGALIA COUNTY ADDRESS ADVISORY COMMITTEE AND APPROVED AS MEETING ALL EXISTING REGULATIONS OF SAID COMMITTEE ON 2-5-07 AND IS READY FOR RECORDING BY THE MONONGALIA COUNTY CLERK.

Signature
AUTHORIZED AGENT

of Survey
For
BENTON GROVE

Clinton District, District No. 13
Tax Map No. 19, Part of Parcels 37, 39 & 40
Monongalia County, West Virginia
Surveyed: 4/02 Thru 1/07 Scale: 1" = 200'

TRIAD ENGINEERING, INC.
MORGANTOWN, WV



Signature 5/24/2007