

MAP 13F-(2)



LEGEND

- 1/2" IRON PIN (FOUND)
- ✕ RAILROAD SPIKE
- POINT
- ◻ 5/8" IRON PIN (SET)
- WATER VALVE
- △ RIGHT-OF-WAY
- PROPERTY BOUNDARY

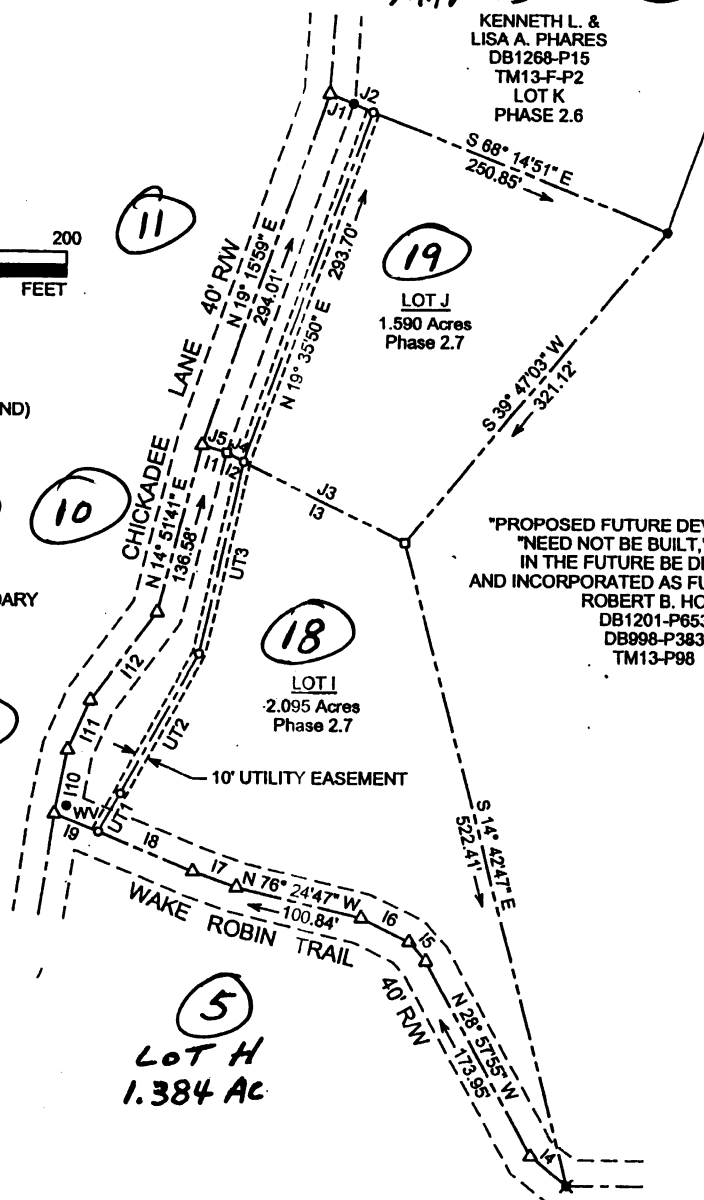
KENNETH L. &
LISA A. PHARES
DB1268-P15
TM13-F-P2
LOT K
PHASE 2.6

LOT J
1.590 Acres
Phase 2.7

"PROPOSED FUTURE DEVELOPMENT,"
"NEED NOT BE BUILT," BUT MAY
IN THE FUTURE BE DEDICATED
AND INCORPORATED AS FUTURE PHASES.
ROBERT B. HOLT
DB1201-P653
DB998-P383
TM13-P98

LOT I
2.095 Acres
Phase 2.7

LOT H
1.384 AC



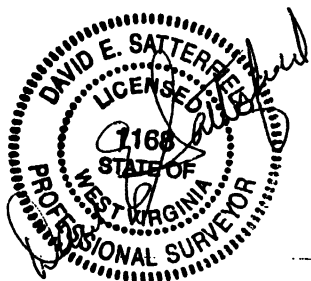
LOT I BOUNDARY		
LINE NUMBER	LINE DIRECTION	LINE DISTANCE
11	S 72°34'30" E	20.00'
12	S 63°25'13" E	15.00'
13	S 63°25'13" E	140.89'
14	N 51°38'06" W	36.94'
15	N 41°09'52" W	20.18'
16	N 63°54'18" W	41.97'
17	N 70°36'17" W	36.23'
18	N 67°52'23" W	80.41'
19	N 67°52'23" W	37.20'
110	N 11°07'08" E	51.80'
111	N 23°51'10" E	43.00'
112	N 36°26'53" E	87.06'

LOT J BOUNDARY		
LINE NUMBER	LINE DIRECTION	LINE DISTANCE
J1	S 68°14'51" E	20.00'
J2	S 68°14'51" E	16.58'
J3	N 63°25'13" W	140.89'
J4	N 63°25'13" W	15.00'
J5	N 72°34'30" W	20.00'

UTILITY EASEMENT		
LINE NUMBER	LINE DIRECTION	LINE DISTANCE
UT1	N 28°41'54" E	35.10'
UT2	N 28°31'05" E	126.76'
UT3	N 12°43'39" E	155.46'

THIS PLAT IS SUBJECT TO
THOSE "NOTES" SET FORTH
ON THAT CERTAIN PLAT ENTITLED
WOODGLEN SUBDIVISION PHASE 1 & 2
RECORDED 1/22/03

DEED REFERENCE - DB1201-P653
MAP REFERENCE - TM13-P98
THIS PROPERTY IS NOT LOCATED IN THE
100 YEAR FLOOD AREA. PANEL 540139 0130B - ZONE C



PLAT OF SURVEY FOR ROBERT B. HOLT		
SCALE: AS SHOWN	SURVEYED BY: CEGRAM LLC 1208 MACOMB ST. MORGANTOWN, WV 26501	DWG NO. 05-40
DATE: 7/24/05		
LOTS I AND J WOODGLEN SUBDIVISION PHASE 2.7 CLINTON DISTRICT		
MONONGALIA COUNTY		WEST VIRGINIA

Exhibit
7/18/2007