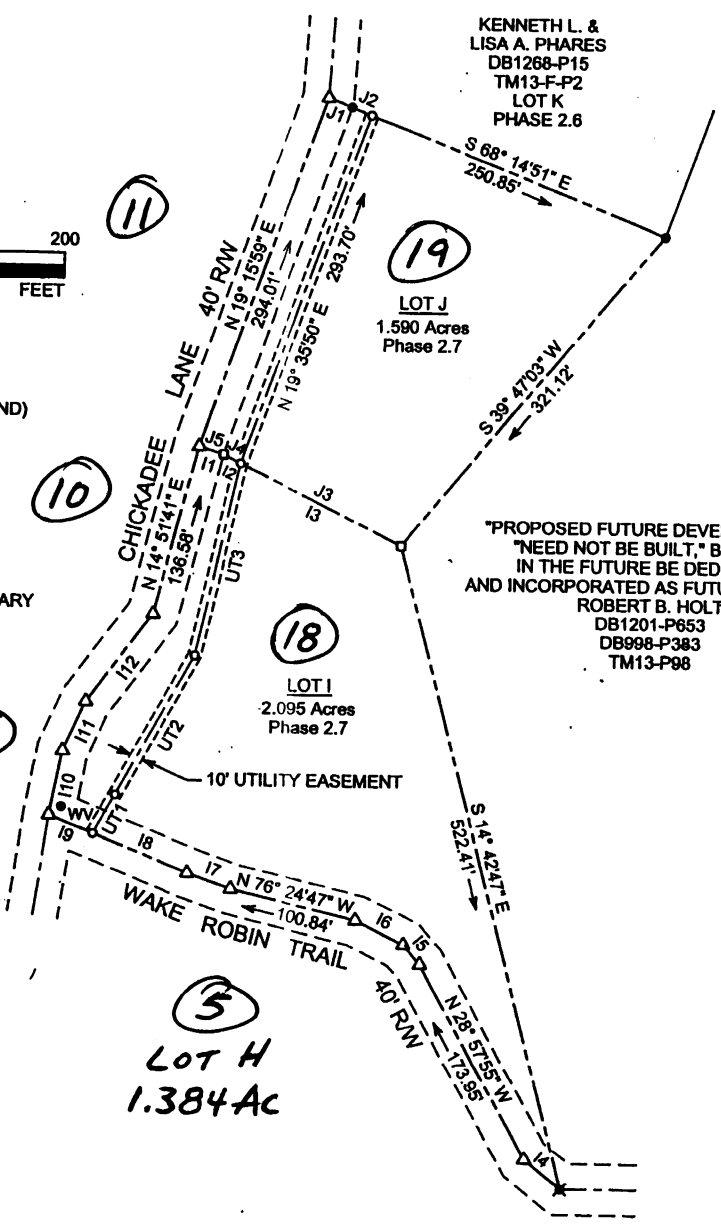


LEGEND

- 1/2" IRON PIN (FOUND)
- ✕ RAILROAD SPIKE
- POINT
- ◻ 5/8" IRON PIN (SET)
- WATER VALVE
- △ RIGHT-OF-WAY
- PROPERTY BOUNDARY



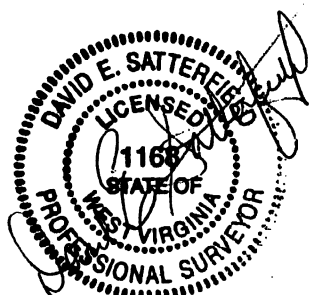
LOT I BOUNDARY		
LINE NUMBER	LINE DIRECTION	LINE DISTANCE
11	S 72°34'30" E	20.00'
12	S 63°25'13" E	15.00'
13	S 63°25'13" E	140.89'
14	N 51°36'06" W	36.94'
15	N 41°09'52" W	20.19'
16	N 63°54'18" W	41.97'
17	N 70°36'17" W	36.23'
18	N 67°52'23" W	80.41'
19	N 67°52'23" W	37.20'
110	N 11°07'09" E	51.80'
111	N 23°51'10" E	43.00'
112	N 36°26'53" E	87.06'

LOT J BOUNDARY		
LINE NUMBER	LINE DIRECTION	LINE DISTANCE
J1	S 68°14'51" E	20.00'
J2	S 68°14'51" E	16.58'
J3	N 63°25'13" W	140.89'
J4	N 63°25'13" W	15.00'
J5	N 72°34'30" W	20.00'

UTILITY EASEMENT		
LINE NUMBER	LINE DIRECTION	LINE DISTANCE
UT1	N 20°41'54" E	35.10'
UT2	N 28°31'05" E	128.76'
UT3	N 12°43'39" E	155.46'

THIS PLAT IS SUBJECT TO THOSE "NOTES" SET FORTH ON THAT CERTAIN PLAT ENTITLED WOODGLEN SUBDIVISION PHASE 1 & 2 RECORDED 1/22/03

DEED REFERENCE - DB1201-P853
 MAP REFERENCE - TM13-P98
 THIS PROPERTY IS NOT LOCATED IN THE 100 YEAR FLOOD AREA. PANEL 540139 0130B - ZONE C



PLAT OF SURVEY FOR ROBERT B. HOLT		
SCALE: AS SHOWN	SURVEYED BY: CEGRAM LLC 1208 MACOMB ST. MORGANTOWN, WV 26501	DWG NO. 05-40
DATE: 7/24/05	LOTS I AND J WOODGLEN SUBDIVISION PHASE 2.7 CLINTON DISTRICT MONONGALIA COUNTY WEST VIRGINIA	

Exhibit

7/18/2007