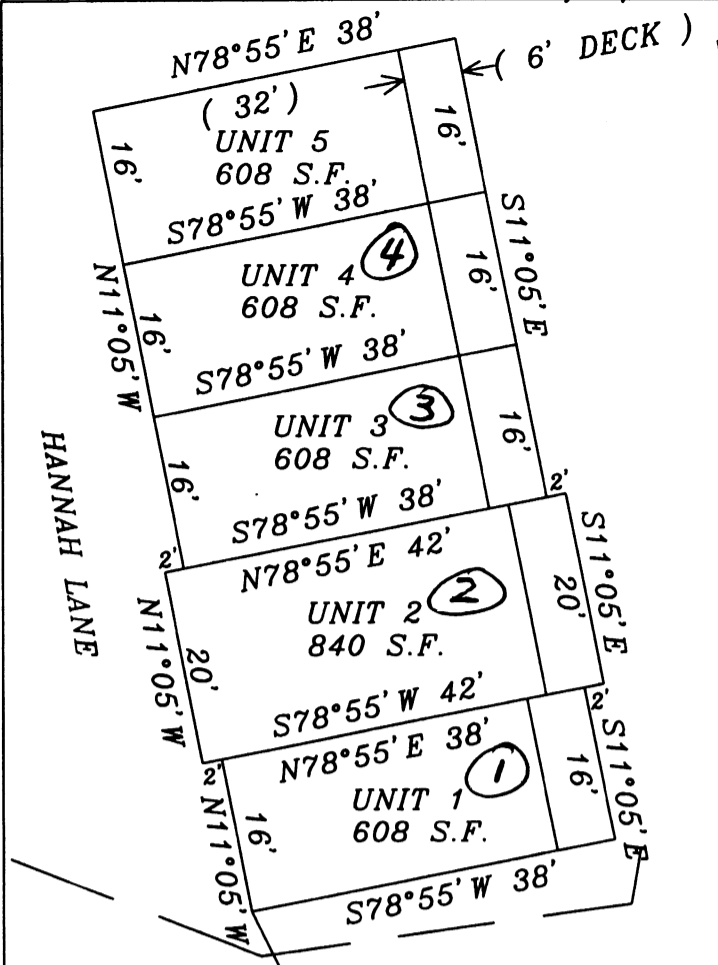


*(NOT OF RECORDED AS OF 11/28/2006)

UNION
21E-(1-4)



HANNAH LANE

DIRT
ROADWAY

P/O
AMERICAN DESIGNERS, INC.
D.B. 1250 PG. 601
T.M. 21 PCL. 14

REFERENCE LINE
N 26°04'20" W 392.59'

N 53°10' W 940.48'

N54°25'25" E 468.35'

WEST VIRGINIA UNIVERSITY
D.B. 140 PG. 468
T.M. 21 PCL. 17

5/8" BAR FOUND
P. O. B.

VAUGHN E. BAKER, JR.
& RUTH E. BAKER
D.B. 999 PG. 101
T.M. 21 PCL. 15.8

11/28/2006

BUILDING LOCATION
PINNACLE TOWNHOMES

PLAN NO. 1

BUILDING CONCRETE FORMS LOCATED 6-12-2006

UNION DISTRICT
MONONGALIA COUNTY
WEST VIRGINIA

SCALE: 1"=20'
JUNE 12, 2006
DRAWN BY: MPD

CTL JOB NO. 03100042WV



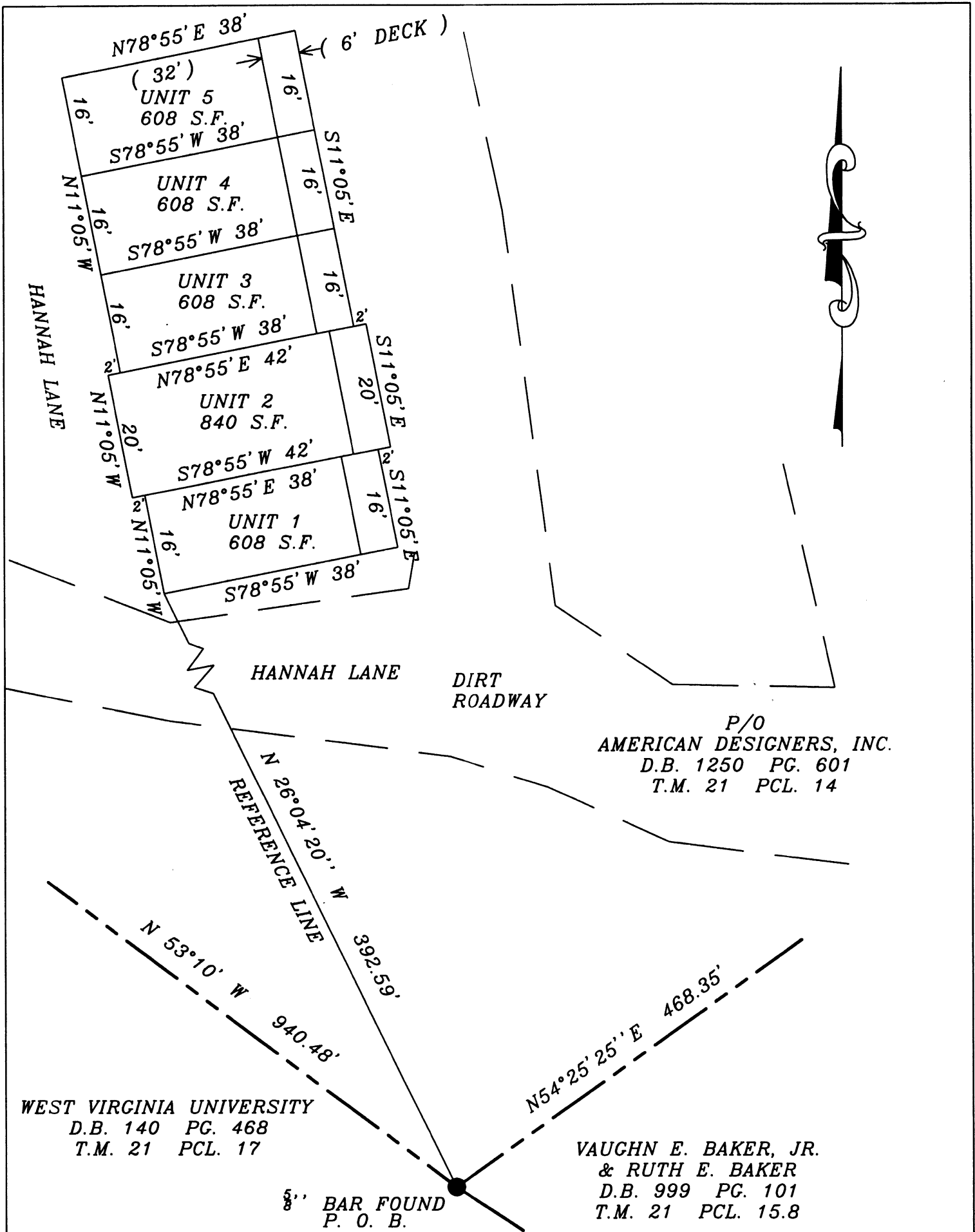
CTL ENGINEERING OF WEST VIRGINIA, INC.

733 Fairmont Road
Morgantown, WV 26501
Phone: 304/292-1135
Fax: 304/296-9302

510 C Street
South Charleston, WV 25303
Phone: 304/746-1140
Fax: 304/746-1143

CONSULTING ENGINEERS * TESTING * INSPECTION SERVICES * ANALYTICAL LABORATORIES

Michael P. Dorsch
MICHAEL P. DORSCH, P.S. 457



P/O
AMERICAN DESIGNERS, INC.
 D.B. 1250 PG. 601
 T.M. 21 PCL. 14

WEST VIRGINIA UNIVERSITY
 D.B. 140 PG. 468
 T.M. 21 PCL. 17

VAUGHN E. BAKER, JR.
 & **RUTH E. BAKER**
 D.B. 999 PG. 101
 T.M. 21 PCL. 15.8

5' BAR FOUND
 P. O. B.

BUILDING LOCATION
PINNACLE TOWNHOMES
PLAN NO. 1

UNION DISTRICT
 MONONGALIA COUNTY
 WEST VIRGINIA

SCALE: 1"=20'
 JUNE 12, 2006
 DRAWN BY: MPD

BUILDING CONCRETE FORMS LOCATED 6-12-2006

CTL JOB NO. 03100042WV



CTL ENGINEERING OF WEST VIRGINIA, INC.

733 Fairmont Road	510 C Street
Morgantown, WV 26501	South Charleston, WV 25303
Phone: 304/292-1135	Phone: 304/746-1140
Fax: 304/296-9302	Fax: 304/746-1143

CONSULTING ENGINEERS * TESTING * INSPECTION SERVICES * ANALYTICAL LABORATORIES

Michael P. Dorsch
 MICHAEL P. DORSCH, P.S. 457