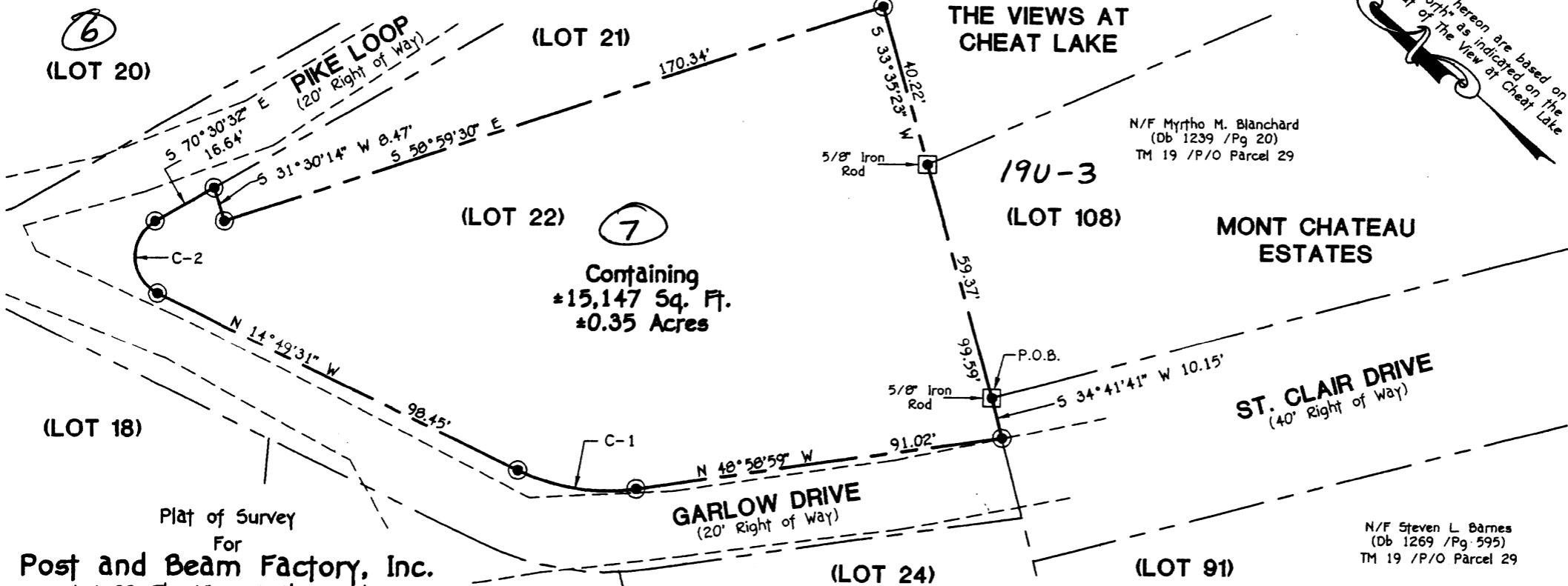


Union  
19V-7

Curve Table					
CURVE	DELTA ANGLE	RADIUS	ARC LENGTH	CHORD BEARING	CHORD LENGTH
C1	34°09'28"	50.00'	29.81'	N 31°54'15" W	29.37'
C2	124°18'59"	10.00'	21.70'	N 47°19'59" E	17.68'

Note: The boundary lines shown hereon were amended and differ from those shown on the recorded plat of "The View at Cheat Lake" Plat Cabinet D / Envelope 30-B, refer to note 1 on said plat.

Bearings shown hereon are based on "Astronomic North" as indicated on the subdivision plat of "The View at Cheat Lake"



N/F Myrtho M. Blanchard  
(Db 1239 /Pg 20)  
TM 19 /P/O Parcel 29

MONT CHATEAU  
ESTATES

ST. CLAIR DRIVE  
(40' Right of Way)

N/F Steven L. Barnes  
(Db 1269 /Pg 595)  
TM 19 /P/O Parcel 29

Plat of Survey  
For  
**Post and Beam Factory, Inc.**  
Lot 22, The View at Cheat Lake  
Union District, District No. 18  
Tax Map No. 19, P/O Parcel 29  
Monongalia County, West Virginia  
Surveyed: 11/05 Scale: 1" = 30'

**Triad Engineering, Inc.**  
Morgantown, West Virginia



Being a part of the same tract or parcel of real estate conveyed unto Post & Beam Factory, Inc., a West Virginia corporation, by Recreational Facilities, Incorporated, a West Virginia corporation, by deed dated the 15th day of September, 2004, of record in the Office of the Clerk of the County Commission of Monongalia County, West Virginia, in Deed Book 1280, at Page 205.

*Ronald A. Talkington*  
**RONALD A. TALKINGTON, PS No. 876**  
Dated: 11/09/05

Legend	
	Monument Found (see description)
	Monument Set (5/8" capped iron rod)
	Point
	Property Line
	Edge of Roadway
P/O	Part Of
N/F	Now or Former
P.O.B.	Point of Beginning

VOL 1308 PAGE 384

3/21/2007