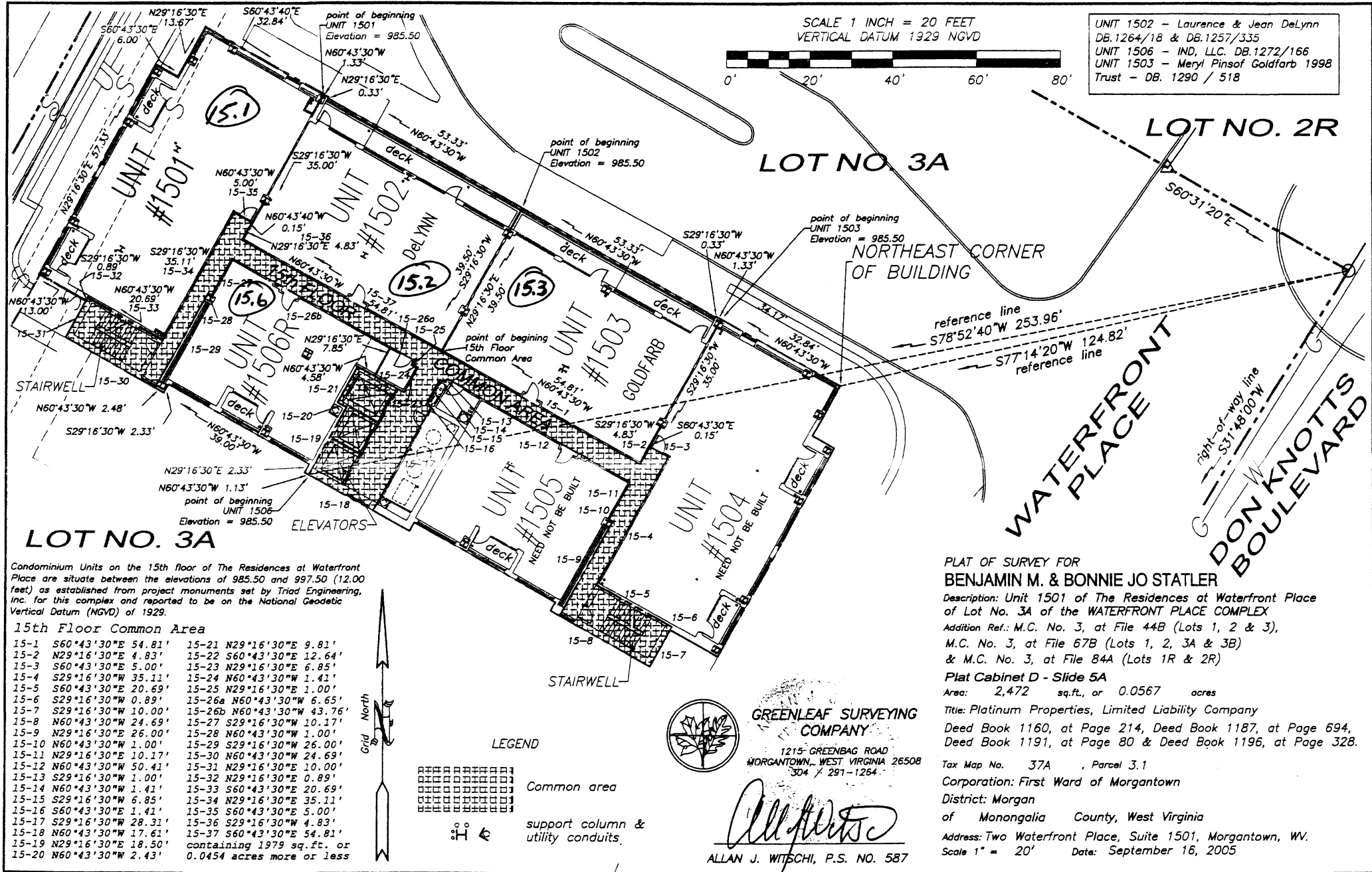
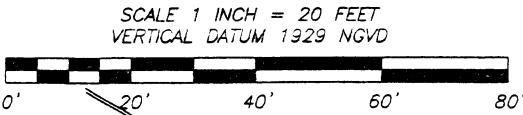


Morgantown First Ward
376-15.1



UNIT 1502 - Laurence & Jean DeLynn
DB.1264/18 & DB.1257/335
UNIT 1506 - IND, LLC. DB.1272/166
UNIT 1503 - Meryl Pinsof Goldfarb 1998
Trust - DB. 1290 / 518



C Condominium Units on the 15th floor of The Residences at Waterfront Place are situate between the elevations of 985.50 and 997.50 (12.00 feet) as established from project monuments set by Triad Engineering, Inc. for this complex and reported to be on the National Geodetic Vertical Datum (NGVD) of 1929.

15th Floor Common Area

15-1	S60°43'30"E 54.81'	15-21	N29°16'30"E 9.81'
15-2	N29°16'30"E 4.83'	15-22	S60°43'30"E 12.64'
15-3	S60°43'30"E 5.00'	15-23	N29°16'30"E 6.85'
15-4	S29°16'30"W 35.11'	15-24	N60°43'30"W 1.41'
15-5	S60°43'30"E 20.69'	15-25	N29°16'30"E 1.00'
15-6	S29°16'30"W 0.89'	15-26a	N60°43'30"W 6.65'
15-7	S29°16'30"W 10.00'	15-26b	N60°43'30"W 43.76'
15-8	N60°43'30"W 24.69'	15-27	S29°16'30"W 10.17'
15-9	N29°16'30"E 26.00'	15-28	N60°43'30"W 1.00'
15-10	N60°43'30"W 1.00'	15-29	S29°16'30"W 26.00'
15-11	N29°16'30"E 10.17'	15-30	N60°43'30"W 24.69'
15-12	N60°43'30"W 50.41'	15-31	N29°16'30"E 10.00'
15-13	S29°16'30"W 1.00'	15-32	N29°16'30"E 0.89'
15-14	N60°43'30"W 1.41'	15-33	S60°43'30"E 20.69'
15-15	S29°16'30"W 6.85'	15-34	N29°16'30"E 35.11'
15-16	S60°43'30"E 1.41'	15-35	S60°43'30"E 5.00'
15-17	S29°16'30"W 28.31'	15-36	S29°16'30"W 4.83'
15-18	N60°43'30"W 17.61'	15-37	S60°43'30"E 54.81'
15-19	N29°16'30"E 18.50'		
15-20	N60°43'30"W 2.43'		

support column & utility conduits.
containing 1979 sq. ft. or 0.0454 acres more or less

LEGEND

[Symbol] Common area

[Symbol] support column & utility conduits.

GREENLEAF SURVEYING COMPANY
1215 GREENBAG ROAD
MORGANTOWN, WEST VIRGINIA 26508
304 / 291-1264
Allan J. Witschi
ALLAN J. WITSCHI, P.S. NO. 587

PLAT OF SURVEY FOR
BENJAMIN M. & BONNIE JO STATLER
Description: Unit 1501 of The Residences at Waterfront Place of Lot No. 3A of the WATERFRONT PLACE COMPLEX
Addition Ref.: M.C. No. 3, at File 44B (Lots 1, 2 & 3), M.C. No. 3, at File 67B (Lots 1, 2, 3A & 3B) & M.C. No. 3, at File 84A (Lots 1R & 2R)
Plat Cabinet D - Slide 5A
Area: 2,472 sq. ft., or 0.0567 acres
Title: Platinum Properties, Limited Liability Company
Deed Book 1160, at Page 214, Deed Book 1187, at Page 694, Deed Book 1191, at Page 80 & Deed Book 1196, at Page 328.
Tax Map No. 37A Parcel 3.1
Corporation: First Ward of Morgantown
District: Morgan
of Monongalia County, West Virginia
Address: Two Waterfront Place, Suite 1501, Morgantown, WV.
Scale 1" = 20' Date: September 16, 2005

file number 001g3a-1501-99

2/8/2007

VOL 1304 PAGE 150