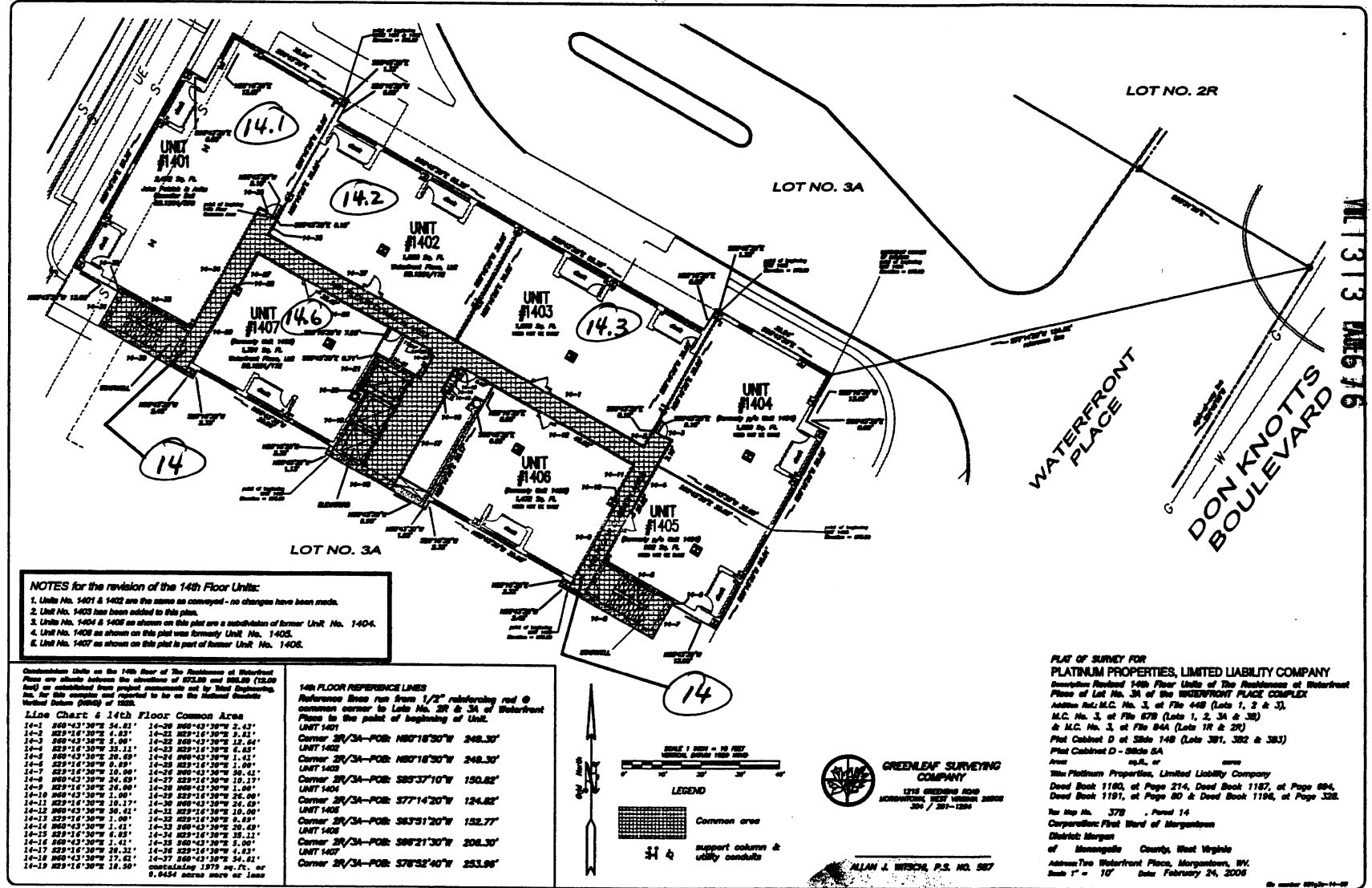


Morgantown First Ward
37B-14.3



NOTES for the revision of the 14th Floor Units:
 1. Units No. 1401 & 1402 are the same as conveyed - no changes have been made.
 2. Unit No. 1403 has been added to this plan.
 3. Unit No. 1404 & 1405 as shown on this plan are a subdivision of former Unit No. 1404.
 4. Unit No. 1406 as shown on this plan was formerly Unit No. 1405.
 5. Unit No. 1407 as shown on this plan is part of former Unit No. 1406.

Construction Units on the 14th floor of the Residence at Waterfront Place are shown relative to the elevations of 672.80 and 680.00 (12.00 feet) as established from project monuments set by Third Engineering, Inc. for this complex and reported to be on the National Geodetic Vertical Datum (NGVD) of 1929.

Line Chart & 14th Floor Common Area

14-1	260°43'38"W	54.81'	14-29	260°43'38"W	2.43'
14-2	229°16'38"W	6.83'	14-30	229°16'38"W	2.43'
14-3	260°43'38"W	5.00'	14-31	260°43'38"W	12.54'
14-4	229°16'38"W	33.21'	14-32	229°16'38"W	2.43'
14-5	260°43'38"W	26.69'	14-33	260°43'38"W	1.41'
14-6	229°16'38"W	9.89'	14-34	229°16'38"W	1.00'
14-7	229°16'38"W	10.00'	14-35	260°43'38"W	50.42'
14-8	260°43'38"W	34.89'	14-36	229°16'38"W	10.13'
14-9	229°16'38"W	24.80'	14-37	260°43'38"W	1.00'
14-10	260°43'38"W	1.00'	14-38	229°16'38"W	26.00'
14-11	229°16'38"W	10.17'	14-39	260°43'38"W	24.89'
14-12	260°43'38"W	56.42'	14-40	229°16'38"W	10.00'
14-13	229°16'38"W	1.00'	14-41	229°16'38"W	6.83'
14-14	260°43'38"W	1.01'	14-42	260°43'38"W	20.89'
14-15	229°16'38"W	6.83'	14-43	229°16'38"W	35.12'
14-16	260°43'38"W	1.41'	14-44	260°43'38"W	2.00'
14-17	229°16'38"W	26.32'	14-45	229°16'38"W	1.83'
14-18	260°43'38"W	17.62'	14-46	260°43'38"W	54.81'
14-19	229°16'38"W	18.50'			

containing 1979 sq. ft. or 0.0454 acres more or less

14th FLOOR REFERENCE LINES
 Reference lines run from 1/2" reinforcing rod @ common corner to Lots No. 2R & 3A of Waterfront Place to the point of beginning of Unit.

UNIT 1401	Corner 2R/3A-POB: N80°18'30"W	248.30'
UNIT 1402	Corner 2R/3A-POB: N80°18'30"W	248.30'
UNIT 1403	Corner 2R/3A-POB: S85°37'10"W	150.82'
UNIT 1404	Corner 2R/3A-POB: S77°14'20"W	124.82'
UNIT 1405	Corner 2R/3A-POB: S83°51'20"W	152.77'
UNIT 1406	Corner 2R/3A-POB: S88°21'30"W	208.30'
UNIT 1407	Corner 2R/3A-POB: S78°52'40"W	253.98'

PLAT OF SURVEY FOR PLATINUM PROPERTIES, LIMITED LIABILITY COMPANY
 Surveying Plat of the 14th Floor Units of the Residence at Waterfront Place of Lot No. 3A of the WATERFRONT PLACE COMPLEX
 Author: M.C. No. 3, of File 448 (Lots 1, 2 & 3), M.C. No. 3, of File 678 (Lots 1, 2, 3A & 3B) & M.C. No. 3, of File 844 (Lots 1R & 2R)
 Plat Cabinet D - Side 14B (Lots 301, 302 & 303)
 Plat Cabinet D - Side 5A
 Area: m.s., or more
 The Platinum Properties, Limited Liability Company
 Deed Book 1160, of Page 214, Deed Book 1187, of Page 804, Deed Book 1191, of Page 82 & Deed Book 1196, of Page 328.
 For Map No. 37B - Parcel 14
 Corporate First Ward of Morgantown
 District: Morgan
 of Monongalia County, West Virginia
 Address: Two Waterfront Place, Morgantown, WV.
 Book 1 - 10 Date: February 24, 2007

* Plat regarding the 14th Floor is also of record in MAP CAB D-53B, which may be easier to read.

Alan J. Witsch
 ALAN J. WITSCH, P.S. NO. 587

2/8/2007