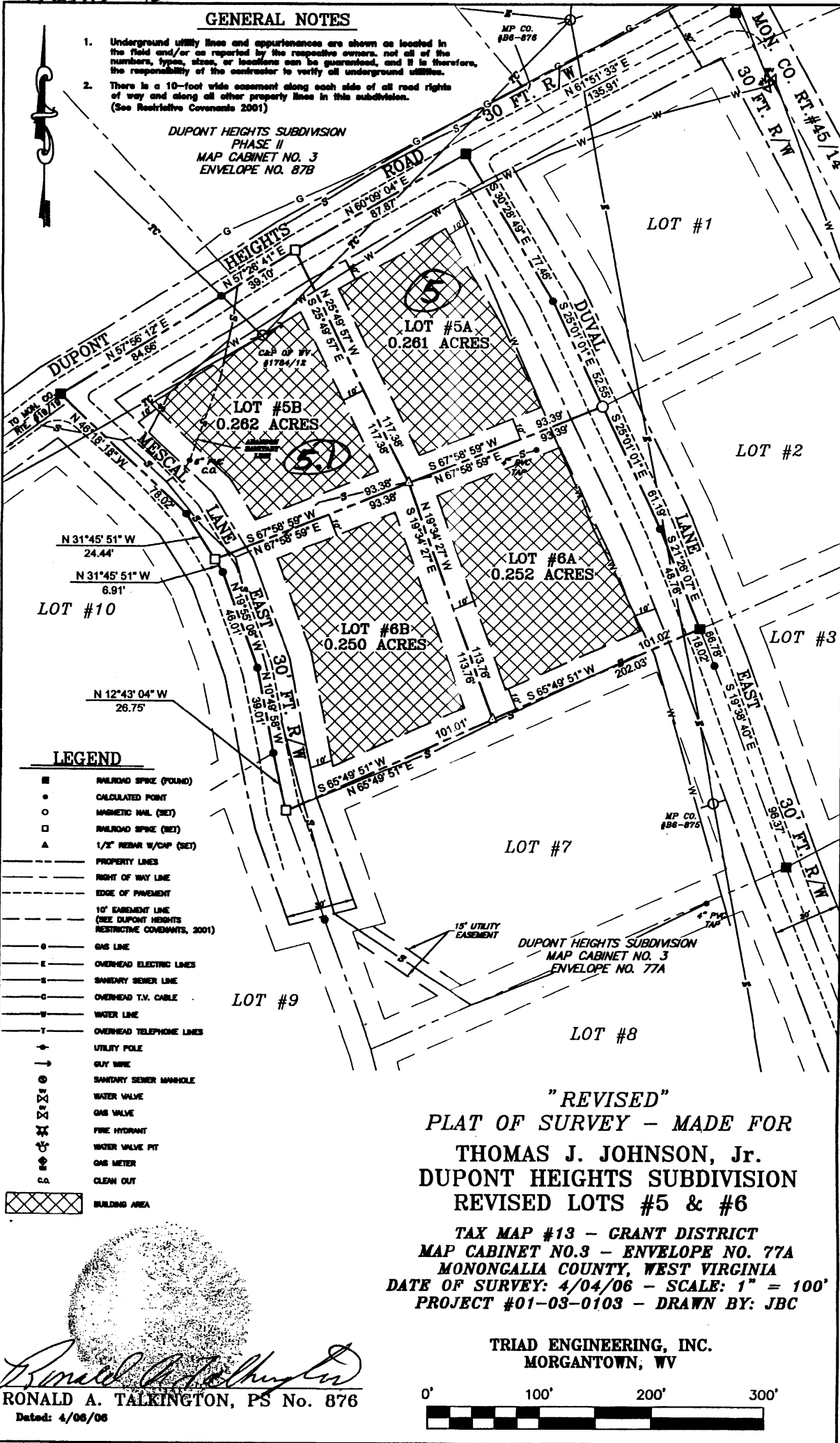


495590 1315-84

GENERAL NOTES

- Underground utility lines and appurtenances are shown as located in the field and/or as reported by the respective owners. Not all of the numbers, types, sizes, or locations can be guaranteed, and it is therefore, the responsibility of the contractor to verify all underground utilities.
- There is a 10-foot wide easement along each side of all road rights of way and along all other property lines in this subdivision. (See Restrictive Covenants 2001)

DUPONT HEIGHTS SUBDIVISION
 PHASE II
 MAP CABINET NO. 3
 ENVELOPE NO. 87B



LEGEND

- RAILROAD SPIKE (FOUND)
- CALCULATED POINT
- MAGNETIC NAIL (SET)
- RAILROAD SPIKE (SET)
- ▲ 1/2" REBAR W/CAP (SET)
- PROPERTY LINES
- RIGHT OF WAY LINE
- EDGE OF PAVEMENT
- 10' EASEMENT LINE (SEE DUPONT HEIGHTS RESTRICTIVE COVENANTS, 2001)
- GAS LINE
- OVERHEAD ELECTRIC LINES
- SANITARY SEWER LINE
- OVERHEAD T.V. CABLE
- WATER LINE
- OVERHEAD TELEPHONE LINES
- ↑ UTILITY POLE
- ↑ GUY WIRE
- SANITARY SEWER MANHOLE
- WATER VALVE
- GAS VALVE
- FIRE HYDRANT
- WATER VALVE PIT
- GAS METER
- CLEAN OUT
- ▨ BUILDING AREA

"REVISED"
 PLAT OF SURVEY - MADE FOR
 THOMAS J. JOHNSON, Jr.
 DUPONT HEIGHTS SUBDIVISION
 REVISED LOTS #5 & #6
 TAX MAP #13 - GRANT DISTRICT
 MAP CABINET NO.3 - ENVELOPE NO. 77A
 MONONGALIA COUNTY, WEST VIRGINIA
 DATE OF SURVEY: 4/04/06 - SCALE: 1" = 100'
 PROJECT #01-03-0103 - DRAWN BY: JBC

TRIAD ENGINEERING, INC.
 MORGANTOWN, WV



Ronald A. Talkington
 RONALD A. TALKINGTON, PS No. 876
 Dated: 4/06/06

JBC 8/25/2006