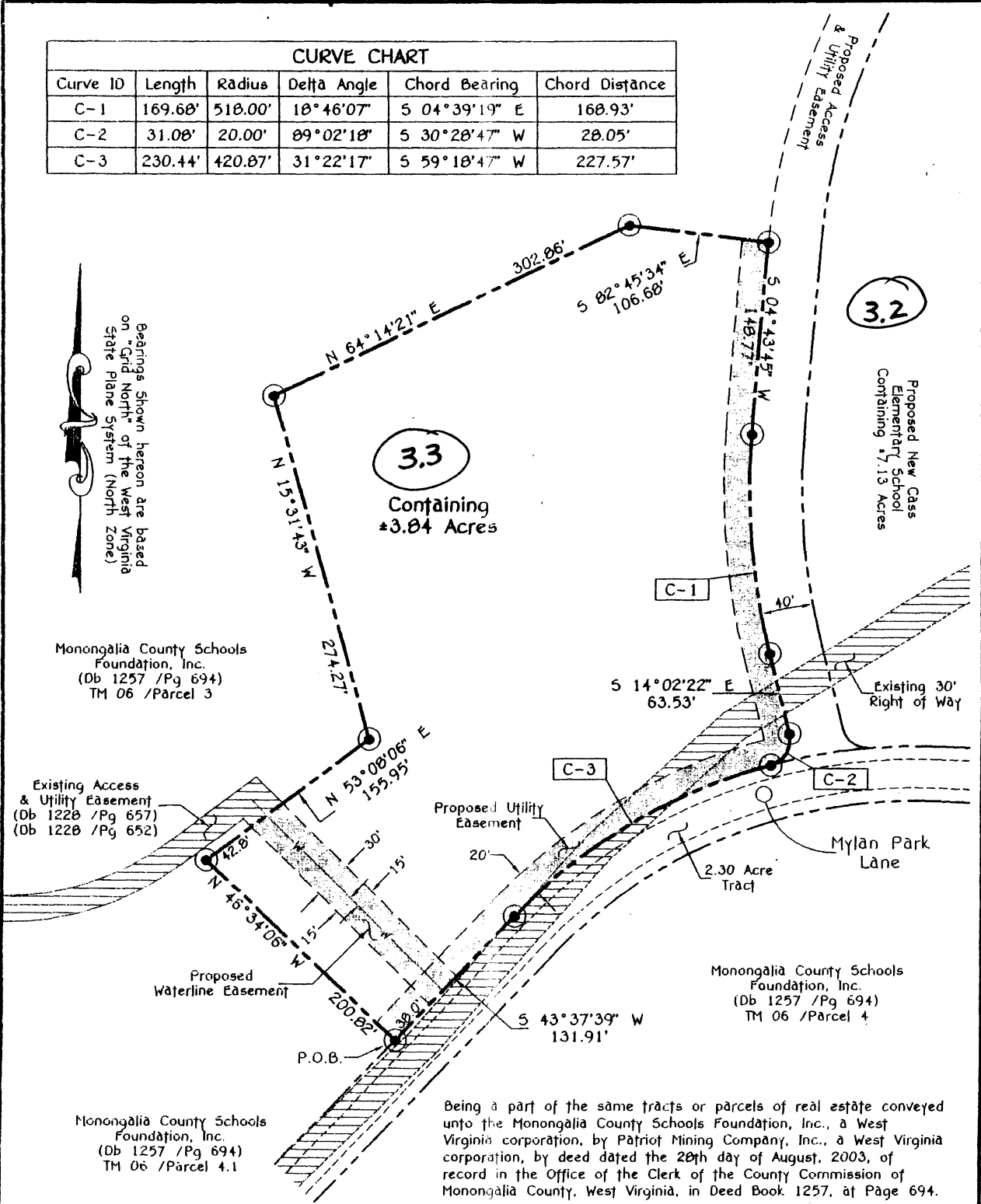


CURVE CHART					
Curve ID	Length	Radius	Delta Angle	Chord Bearing	Chord Distance
C-1	169.68'	518.00'	18°46'07"	S 04°39'19" E	168.93'
C-2	31.08'	20.00'	89°02'18"	S 30°28'47" W	28.05'
C-3	230.44'	420.87'	31°22'17"	S 59°18'47" W	227.57'

Bearings Shown hereon are based on "Grid North" of the West Virginia State Plane System (North Zone)



Monongalia County Schools Foundation, Inc. (Db 1257 /Pg 694) TM 06 /Parcel 3

Existing Access & Utility Easement (Db 1228 /Pg 657) (Db 1228 /Pg 652)

Proposed Waterline Easement

Proposed Utility Easement

Monongalia County Schools Foundation, Inc. (Db 1257 /Pg 694) TM 06 /Parcel 4

Monongalia County Schools Foundation, Inc. (Db 1257 /Pg 694) TM 06 /Parcel 4.1

Being a part of the same tracts or parcels of real estate conveyed unto the Monongalia County Schools Foundation, Inc., a West Virginia corporation, by Patriot Mining Company, Inc., a West Virginia corporation, by deed dated the 28th day of August, 2003, of record in the Office of the Clerk of the County Commission of Monongalia County, West Virginia, in Deed Book 1257, at Page 694.

Plat of Survey For Pace Training & Evaluation Center

Grant District, District No. 11
Tax Map No. 06, P/O Parcel 3, 4 & 4.1
Monongalia County, West Virginia
Surveyed: 10/04 Scale: 1" = 100'

Triad Engineering, Inc.
Morgantown, West Virginia



Legend

- Monument Found (see description)
- ⊙ Monument Set (5/8" Capped Iron Rod)
- Point
- Property Line
- - - Edge of Right-of-Way
- - - Edge of Roadway
- w - w - Existing Waterline (Approximate)
- P.O.B. Point of Beginning
- P/O Part of

Ronald A. Talkington
RONALD A. TALKINGTON, PS No. 876

Dated: 10/05/04
Revised: 10/17/05

By 8/22/2006